

# ShinMaywa Industries, Ltd.

## Introduction for Environmental System (1. Waste Transfer Station, 2. Dust Screw)

### 1. Waste Transfer Station

#### Main Application

This station transfers the waste from collection vehicle and/or cart to large-size container, and improves the efficiency of the waste transportation.



Waste Transfer Station

#### Outline

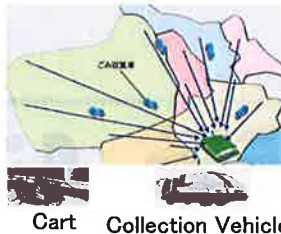
The waste collected by collection vehicle and/or cart is compacted into large-size container, then, efficiently transported to final disposal site.

Cost-down for the waste transportation, CO<sub>2</sub>-reduction, Easiness for traffic congestion and gas-exhaust, Reduction of traffic noise, and environmental protection are born by this station.

#### Main Merit

- 1) Efficiency for Waste Transportation
- 2) Environmental Friendly (CO<sub>2</sub> Reduction)
- 3) Easiness for Traffic Congestion

#### Direct Transportation

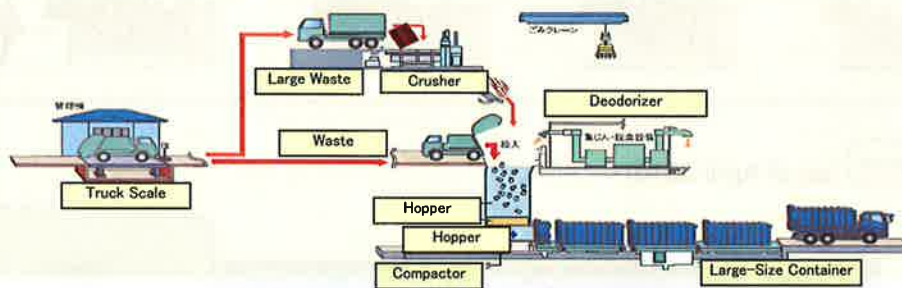


Cart Collection Vehicle

#### Waste Transfer Station (Efficient & Environmental Friendly)



#### Flow



#### Delivery Reference

(as of April 2010)



## 2. Dust Screw



Dust Screw

### Main Application

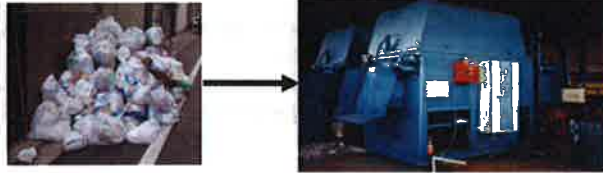
The waste born in apartment and/or office is temporarily kept with compacted condition, then, is transferred to collection vehicle.

### Outline

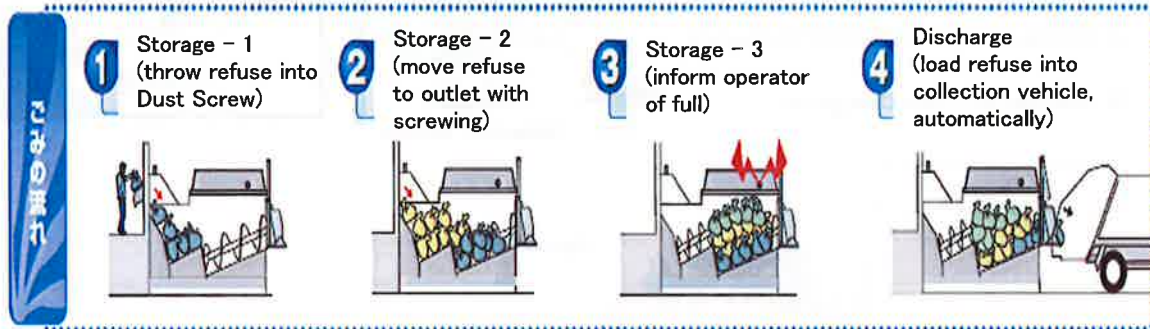
Smaller space for waste storage space, Efficiency for waste collection work, Improvement for hygiene ...etc. is solved by this Dust Screw.

### Main Merit

- 1) Hygiene
- 2) Smaller Space for Waste Storage
- 3) Automatic  
(Automatically loading the waste into collection vehicle)



### Flow



### Delivery Reference (as of April 2010)



### [Contact Information]

Company Name: ShinMaywa Industries, Ltd.  
Department: International Business Management Div., Project Sales & Marketing Dept.  
Person Name: Kyohei Furuichi  
TEL: +81-45-584-1321  
E-Mail: [furuichi.k@sb.shinmaywa.co.jp](mailto:furuichi.k@sb.shinmaywa.co.jp)